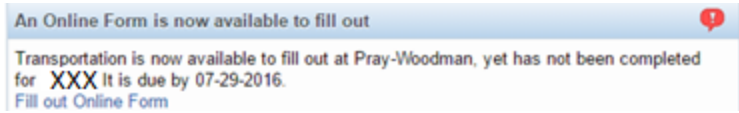
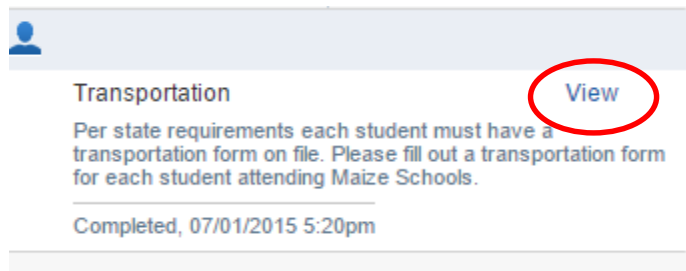
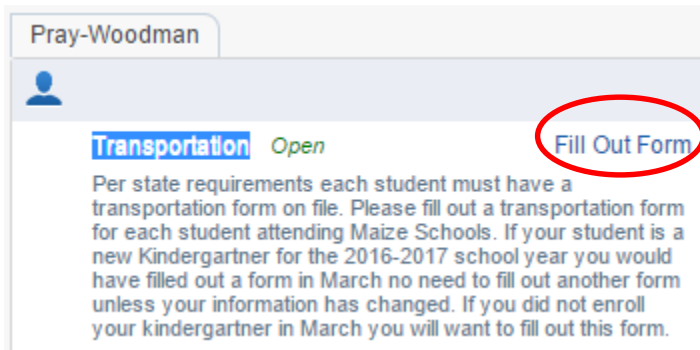
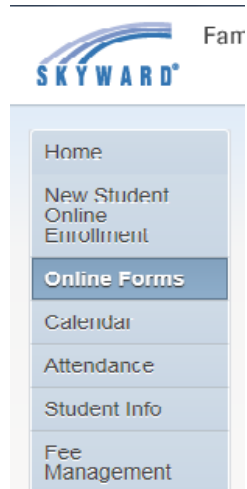


# TRANSPORTATION FORM INSTRUCTIONS

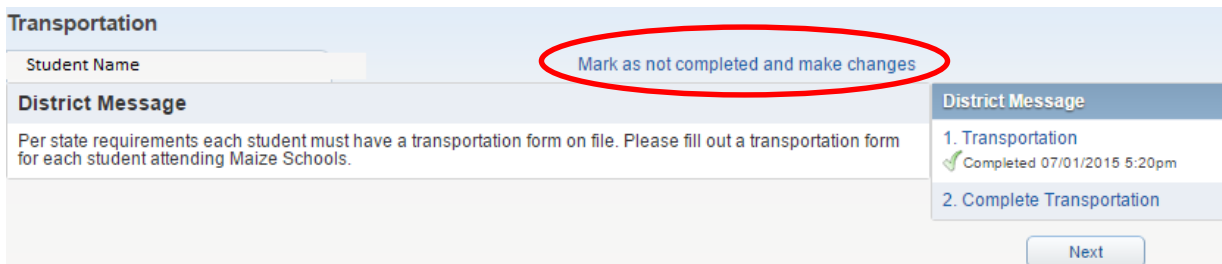
1. Login to Skyward Family Access and select your student from top drop-down list.
2. If you have a link on your wall you can click on the **Fill Out Online Form**. If not continue to next step.



3. If you do not see a note on your wall, click **Online Forms** button located on left side of page and select the **Transportation** Form. Click on **Fill Out Form** or **View** if it shows your form was previously filled out. A new form must be filled out each new school year.



4. If you clicked on **View** in the previous step, click on **Mark as not complete and make changes**. If you do not see this message continue to the next step.



5. Click on **1. Transportation** on the right side of the page.

rtation - Google Chrome

sd266.com/scripts/wsisa.dll/WService=wsEPlus/sfonlinereg001.w

Family Access

My Account | Email History | Exit

District Links

### Transportation

Student Name

**District Message**

Per state requirements each student must have a transportation form on file. Please fill out a transportation form for each student attending Maize Schools. If your student is a new Kindergartner for the 2016-2017 school year you would have filled out a form in March no need to fill out another form unless your information has changed. If you did not enroll your kindergartner in March you will want to fill out this form.

**District Message**

- 1. Transportation
- 2. Complete Transportation

Next

Close and Finish Later

6. Complete the Bus Form

Bus Form - Entity 031 - 05.14.10.00.10 - Internet Explorer

https://skyward.usd266.com/scripts/wsisa.dll/WService=wsEPlus/qqudfedit050.w

### Bus Form

Name:  Gender:  Grad Yr:  Other ID:

### BUS FORM

**A parent must provide this information to our Transportation Department . Please be sure to fill out a form for each student attending Maize Public Schools REGARDLESS of whether your student will be riding the bus .**

Collecting this information is necessary for public, state and federal reporting and funding as well as school feedback reports. The Family Educational Rights and Privacy Act (FERPA) provides parameters for what is permissible and KSDE has implemented strict data governance guidelines and processes to protect the privacy of every student and to ensure the confidentiality and security of all data collected and managed. Schools are required to report data necessary to support state and federal funding/reporting.

Kansas State Department of Education - Data Collection Fact Sheet ([click here](#))

Today's Date:  Are You a :

**BEFORE SCHOOL PICK UP INFORMATION :**

Will student ride the bus to school?

Pick up student at:

Childcare Provider Name:

Childcare Provider Street Address:

Childcare Provider City:

Childcare Provider Phone Number:

Childcare Provider Alternate or Cell Number:

**AFTER SCHOOL DROP OFF INFORMATION:**

Will student ride the bus after school?

Drop off student at:

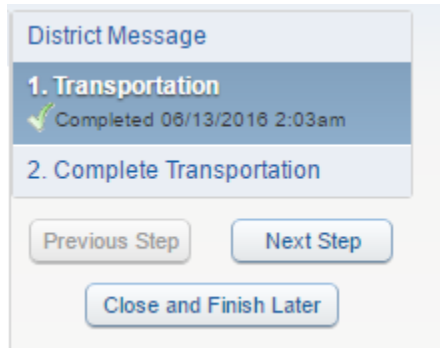
Childcare Provider Name:

javascript:if (cbs("bSave")) {processFormValues("save")}

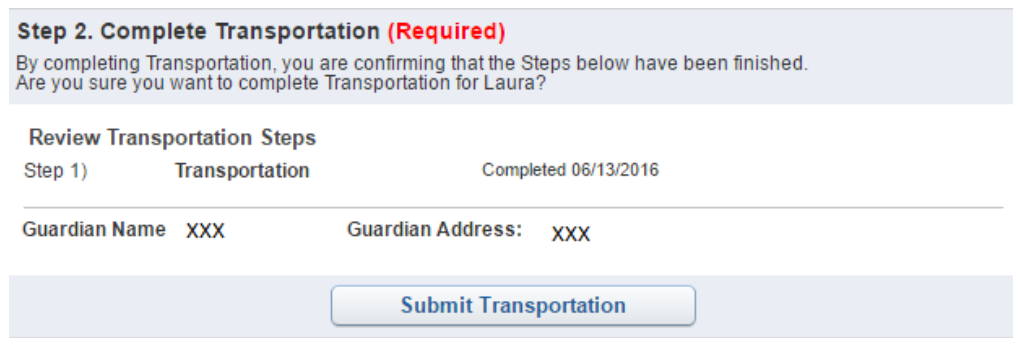
7. Click on **Complete Step 1 Only** button at the bottom or top of the page.



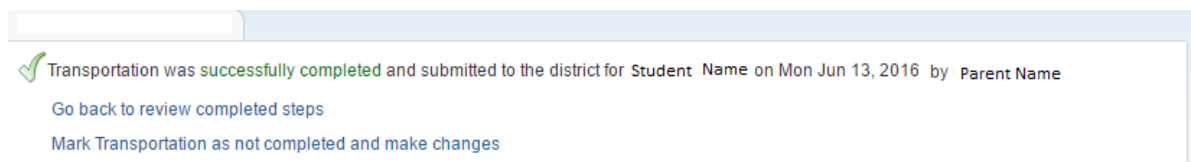
8. Click **2. Complete Transportation** button on left side of page.



9. Click **Submit Transportation** button.



10. You will get a confirmation page that looks similar to this.



11. If your student has siblings, you can repeat these steps or you may exit out of Skyward.