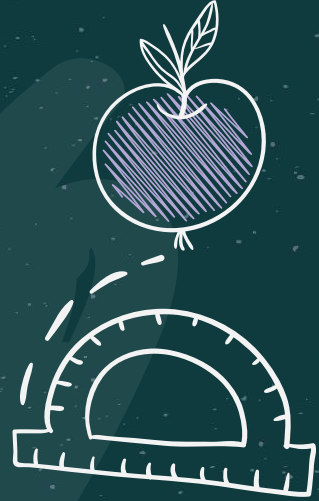




Together For Tomorrow

Operational Considerations and
Guidelines, July 6, 2020



Operations Work Overview

Operations team consists of 19 staff members representing:

- **Maintenance and Grounds**
- **Custodial**
- **Food Service**
- **Health Services**
- **Transportation**
- **Human Resources**



This team has met as a whole group and also as smaller, area-specific teams for the past several weeks. The goal of this group is to support teaching and learning by creating a safe and welcoming school environment for students and staff members.



Forthcoming Guidance



As a team, we are assembling an operating guidelines manual.

Topics include:

- **Universal precautions, health services, transportation, arrival and dismissal, volunteers and visitors, transitions, food service, activities, technology, personnel, and exposure protocol**
- **This work-in-progress document will set minimum standards for buildings for face-to-face learning, remote learning, and a hybrid model.**

Pressing Topics

- **Social Distancing**
- **Face Coverings**
- **Workforce Availability**
- **Temperature and Other Screenings**
- **Physical Plant and Resource Considerations**

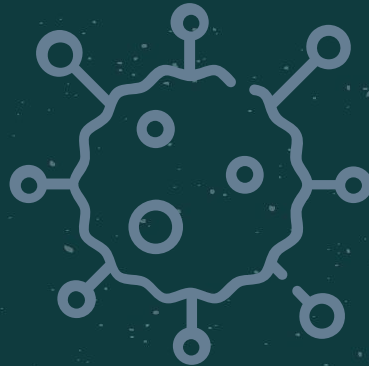


Social Distancing



- Current research ([CDC](#), [KDHE](#), [OSHA](#)) indicates that limiting face-to-face contact with others is the best way to reduce the spread of COVID-19.
- [Spread](#) most commonly occurs when an infected person coughs, sneezes, or talks. These actions cause droplets of infected bodily fluids to become airborne. Airborne droplets then come in contact with the mouths or noses of people nearby.

- **While it is possible to get the virus by touching a surface or object that has the virus on it and then touching your mouth, nose, or eyes, this is not the main way the virus spreads.**
- **Social distancing helps limit occurrences of both airborne and surface contact.**



Social Distancing Challenges



- **Physical Space**
 - **Hallways, classrooms, cafeterias, buses**
- **Number of Students**
 - **Some buildings and many bus routes are operating at full capacity**
- **Compliance**
- **How far? Most sources cite six feet as the appropriate distance. The American Academy of Pediatrics suggests that three feet may be sufficient.**

Face Coverings

- **Face coverings** may not protect the wearer, but can prevent the wearer from spreading the virus to others.
- **Asymptomatic and pre-symptomatic individuals can spread the virus without knowing they are infected.**
- **Face coverings, along with social distancing, frequent handwashing, cleaning, and disinfecting can dramatically slow the spread of COVID-19.**



Executive Order and City Ordinance



- **Requires face coverings in all indoor public spaces when distancing of six feet is not possible at all times**
- **Requires face covering in outdoor public spaces when social distancing is not maintained**
- **Requires face covering when riding public transportation**
- **Provides exemptions (under 5 years old, medical, hearing-impaired, athletics with distancing, and others)**

Face Mask Challenges

- **Comfort**
- **Teaching-specific challenges**
- **Compliance**
- **Who and when?**
 - **Executive order is an attempt to prepare for schools to open but did not specifically address the school setting.**
 - **Challenges vary at different levels. PK vs. High School**
 - **AAP recommends: PK-no masks, Elementary-masks when they do not cause harm, Secondary-masks when unable to maintain six-foot distance**

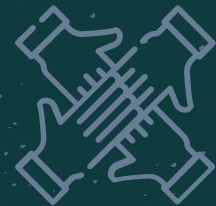


Workforce Availability

The potential unavailability of staff members is a growing concern. In addition to those who may become infected with the virus, we are aware of some staff members who have elected not to return as a way to protect their health and/or the health of family members.



- **Teachers: Availability after positive case**
- **Bus drivers: Three current vacant routes, twelve others awaiting our plan to decide**
- **Substitute teachers: Especially important in this time of potential illness**
- **Custodial: Additional staff members may be needed to keep up with demands**
- **Food service: Additional staff members may be needed to keep up with demands**
- **Posted positions are yielding few applications**



Temperature and Other Screenings



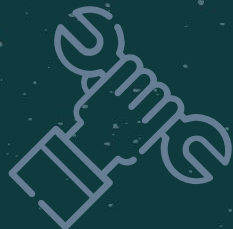
- A health screening questionnaire is in development.
- We may recommend the screening questionnaire be taken by all visitors, all staff members before returning to work in the fall, and any staff member or student who reports not feeling well after returning to school.
- Our school nurses recommend that we take temperatures of any visitors to the building (who travel beyond the front office) and any staff member or student who report feeling ill.

- **Our nurses do not believe that daily temperature checks of all staff members and students is feasible.**
- **We also may recommend a second, more brief screening questionnaire be developed and sent home to parents. We would ask parents to use this screener daily prior to sending students to school.**



Physical Plant and Resources

- **Operations staff members have been working to identify physical improvements that can be made to help reduce the spread of COVID-19 and/or other viruses, bacteria, germs.**
 - **Water Bottle Fill Stations**
 - **No-Touch Faucets**
 - **Sneeze Guards**
 - **Review of HVAC systems and air exchange programming**



- **Operations staff has secured pricing and procurement information from vendors**
 - **Adult Masks- Disposable and reusable**
 - **Youth Masks**
 - **Hand Sanitizer**
 - **Hand Sanitizer Dispensers**
 - **Additional Electrostatic Sprayers**
 - **Additional Solution for Sprayers**



Financial Implications

- **Increased staffing needs**
 - **Cleaning**
 - **Transportation**
 - **Supervision**
 - **Substitutes**
- **Additional supplies**
 - **Sanitization**
 - **Shields/masks**



Next Steps



- **Continue to review the work done by T4T teams and work to support recommendations**
- **Continue development of the operations manual document**
- **Procure additional supplies**
- **Constant monitoring of local, state, and federal guidelines**
- **Constant monitoring of COVID-19 cases, mutations, and prevention tactics**

Timeline

July

- 1 - **Team Lead Meeting (Compile and organize team drafts)**
- 6- **BOE Work Session (Health & Safety Protocols)**
- 7 - **T4T: Complete Draft 1**
T4T Resource Webpage Communication
- 8 - **T4T: Team Lead Meeting (Prevailing Research & Guidance Review)**
- 9 - **KSDE / KDHE Meeting (Preview KSDE Guidance)**
- 10 - **Regional Meeting w/ Sedgwick County Health Department**
- 13 - **BOE Meeting (Preview T4T Draft 1)**
- 14 - **KS BOE Guidance Adoption**
T4T Staff/Family Communication / Survey
- 15- **Kansas COVID Workgroup for Kids (KCWK) Guidance Meeting**
- 16 - **KSDE Meeting**
T4T: Develop Final Plan

Timeline

July

20 - 31

Teacher Curriculum Academies
Operational review and resource alignment
BOE T4T Adoption
20-21 District Calendar Review

Questions & Discussion

t4t@usd266.com



CREDITS: This presentation template was created by [Slidesgo](#), including icons by [Flaticon](#), and infographics & images by [Freepik](#).

Please keep this slide for attribution.